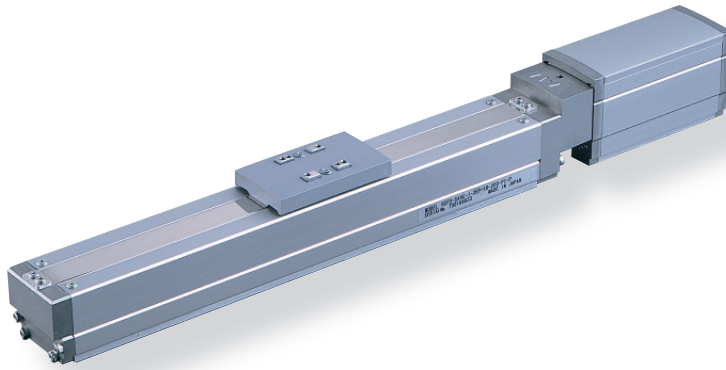


RCP3-SA4C

ROBO Cylinder, Slider Type, Actuator Dimensions 40mm, Pulse Motor, Coupling Specification

Model Description	RCP3 — SA4C — I — 35P — — — P1 — — 							
Series	Type	Encoder type	Motor type	Lead	Stroke	Compatible Controllers	Cable length	Option
I: Incremental specification	35P: Pulse motor 35□Size	10: 10mm 5: 5mm 2.5: 2.5mm	50:50mm ~ 400:400mm (Set pitch every 50mm)	P1: PCON PSEL	N : None P : 1m S : 3m M : 5m X□□ : Length designation	B: Brake-equipped NCO: No cover specification NM: Reverse-home specification		

See preceding section for model descriptions.

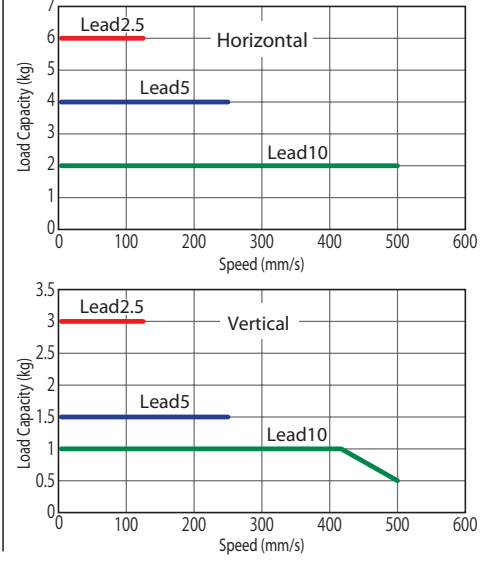


Technical Reference P.451

POINT
Notes on selection

- (1) Since the RCP3 Series uses a pulse motor, the payload decreases at high speeds. Confirm the payload at the desired speed in the Speed vs. Payload graph at right.
- (2) The payload is the value when operated at 0.3G acceleration (0.2G acceleration in vertical operation with lead 2.5). The above values are maximum acceleration.

Speed vs. Payload Graph
Since the RCP3 Series uses a pulse motor, the payload decreases at high speeds. Use the table below to confirm that there is sufficient payload at the desired speed.



Actuator Specification Table					
Leads and Payloads					
Model	Lead (mm)	Maximum payload		Maximum pushing force (N)	Stroke (mm)
		Horizontal (kg)	Vertical (kg)		
RCP3-SA4C-I-35P-10-①-P1-②-③	10	2	Up to 1	34	50 to 400 (every 50mm)
RCP3-SA4C-I-35P-5-①-P1-②-③	5	4	1.5	68	
RCP3-SA4C-I-35P-2.5-①-P1-②-③	2.5	6	3	136	
Legend ① Stroke ② Cable Length ③ Option					
Stroke and Maximum Speed					
Stroke / Lead	50 to 400 (every 50mm)				
	Stroke	Maximum Speed			
10	500				
5	250				
2.5	125				

(Unit = mm/s)

① Price List by Stroke (Standard Price)

① Stroke (mm)	Type code	
	SA4C	
	Encoder type	
	Incremental	
	Actuator Cover	
	With cover (Standard)	No cover (Option)
50	—	—
100	—	—
150	—	—
200	—	—
250	—	—
300	—	—
350	—	—
400	—	—

② Cable Length Price List (Standard Price)

Type	Cable symbol	Standard price
Standard type (Robot cable)	P (1m)	—
	S (3m)	—
	M (5m)	—
Special length	X06 (6m) — X10 (10m)	—
	X11 (11m) — X15 (15m)	—
	X16 (16m) — X20 (20m)	—

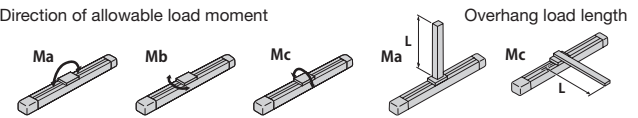
*See P374 about maintenance cables.

③ Option Price List (Standard Price)

Title	Option code	See page	Standard price
Brake-equipped	B	P437	—
No cover	NCO	P24	See above
Reversed-home specification	NM	P442	No charge

Actuator Specification

Item	Description
Drive System	Ball screw φ8mm rolled C10
Positioning Repeatability	±0.05mm
Backlash	0.1mm or less
Base	Material: Aluminum Special alumite treatment
Allowable load moment	Ma: 3.04N·m Mb: 4.31N·m Mc: 5.00N·m
Overhang load length	120mm or less
Ambient operating temperature, humidity	0 to 40°C, 85% RH or less (non-condensing)
Service life	5000km

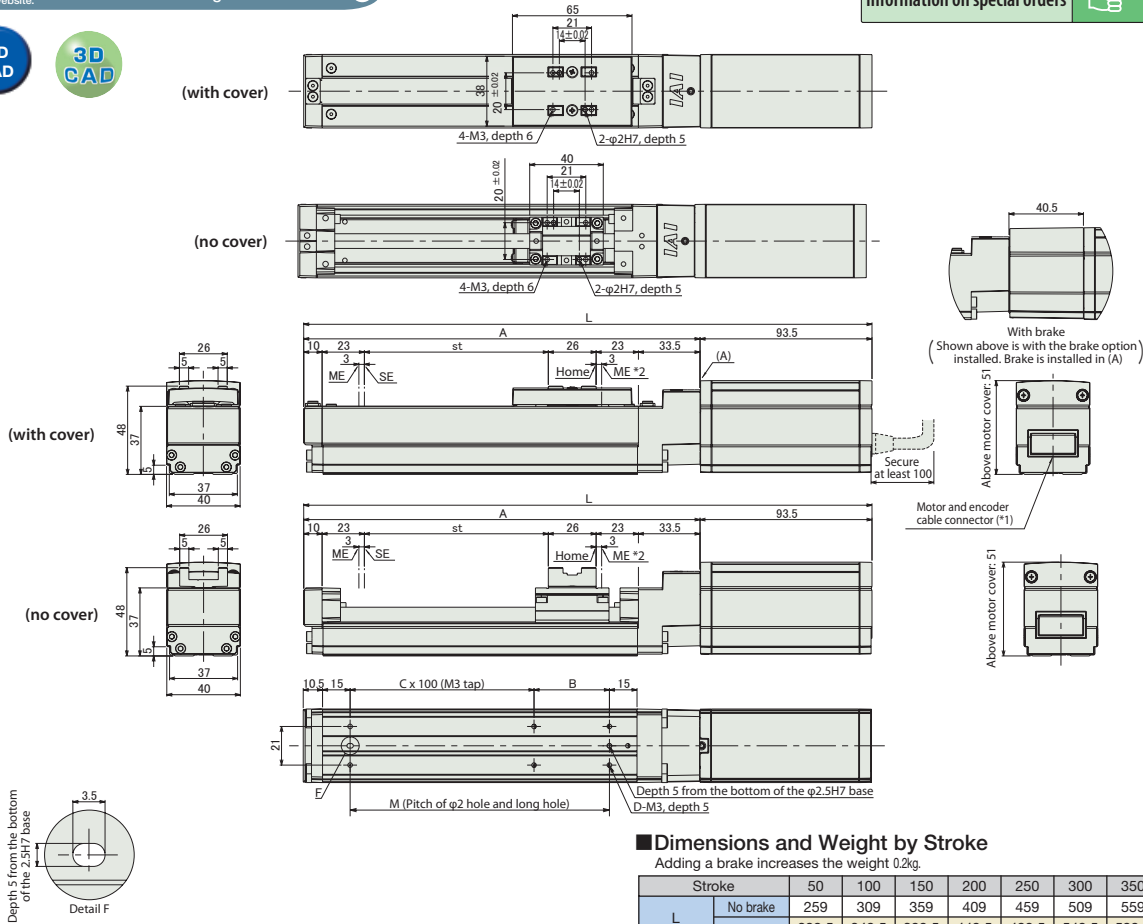


Dimensional Drawings

CAD drawings can be downloaded from the website. www.intelligentactuator.com



Information on special orders P.454



■ Dimensions and Weight by Stroke

Adding a brake increases the weight 0.2kg.

Stroke	Adding a brake increases the weight 0.2kg.								
	50	100	150	200	250	300	350	400	
L	No brake	259	309	359	409	459	509	559	609
	Brake-equipped	299.5	349.5	399.5	449.5	499.5	549.5	599.5	649.5
A	165.5	215.5	265.5	315.5	365.5	415.5	465.5	515.5	
B	91	41	91	41	91	41	91	41	
C	0	1	1	2	2	3	3	4	
D	4	6	6	8	8	10	10	12	
M	91	141	191	241	291	341	391	441	
Weight (kg)	With cover	0.9	1	1.1	1.2	1.3	1.4	1.5	1.6
	No cover	0.9	0.9	1	1.1	1.2	1.2	1.3	1.4

(*) Connect the motor-encoder cable (integrated).
(See P374 for cable details)

(*)2 Watch out for interference with peripheral objects since the slider moves as far as the ME when returning home.

ME: mechanical end
SE: stroke end

Compatible Controllers

The RCP3 Series actuators can be operated with the following controllers. Select the type that is compatible with your application.

Title	External View	Model	Features	Maximum number of positioning points	Input power	Power-supply capacity	Standard price	See page	
Positioner Type		PCON-C-35PI-NP-2-0	Up to 512-point positioning possible	512 points	DC24V	Maximum 2A	-		
Safety category compatible Positioner type		PCON-CG-35PI-NP-2-0							
Solenoid valve type		PCON-CY-35PI-NP-2-0	Same as solenoid valve Controlled operation enabled	3 points					
Pulse series input type (Differential line driver specification)		PCON-PL-35PI-NP-2-0	Differential line driver compatible Pulse series input type	(-)					P365
Pulse series input type (Open collector specification)		PCON-PO-35PI-NP-2-0	Open collector compatible Pulse series input type						
Serial communication type		PCON-SE-35PI-N-0-0	Serial communications Special Type	64 points					
Field network type		RPCON-35P	field network Dedicated type	768 points					P343
Program control type		PSEL-C-1-35PI-NP-2-0	Programmable type capable of operating up to 2 axes	1500 points					P395

*PSEL is for single axis specification.

- Controller-Integrated
- Slider Type
- Rod Type
- Table Arm/Flat
- Gripper/Rotary Type
- Cleanroom
- Splash-resistant
- Controller
- Coupling
- Built-in (Direct)
- Reversed-mounted
- Pulse Motor 20P
- Pulse Motor 28P
- Pulse Motor 35P
- Pulse Motor 42P
- Pulse Motor 56P
- Pulse Motor 86P
- Servo Motor 10W
- Servo Motor 20W
- Servo Motor 30W
- Servo Motor 60W
- Servo Motor 100W
- Servo Motor 150W
- Servo Motor 750W