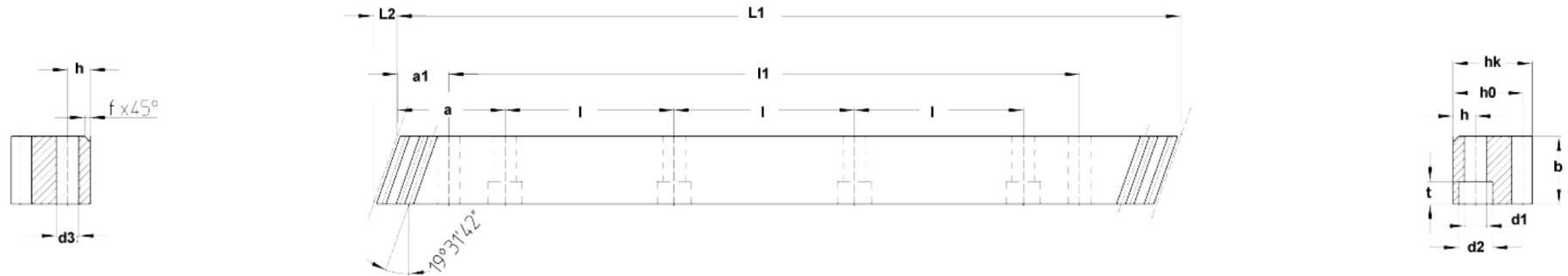


Helical Gear Rack

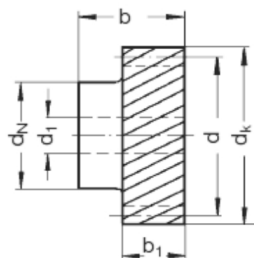
Produced to AGMA 9 standard, 20° pressure angle, with mounting holes and machined ends



Part #	Module	L ₁	L ₂	Number of Teeth	b	h _k	h ₀	a	l	Number of Holes	h	d ₁	d ₂	t	a ₁	l ₁	d ₃	kg
R1.5-150BR	1.5	1500.00	6.0	300	17	17	15.5	62.5	125	12	6	6	10	6	31.7	1436.6	5.7	1.95
R1.5-200BR	1.5	2000.00	6.0	400	17	17	15.5	62.5	125	16	6	6	10	6	31.7	1936.6	5.7	2.60

Note that rack is between HB200 and HB260 (Brinell Hardness)

Helical Tooth System, left-hand, 19° 31' 42", prebored



Hardened to HRC23-HRC28 (Rockwell hardness)

Part #	Number of teeth	b ₁	b	d	d _k	d ₁ (J8)	d _N	kg
Module 1.5								
S1.5-25LQ	25	17	30	39.79	42.8	9	30	0.22
S1.5-32LQ	32	17	30	50.93	53.93	9	30	0.25