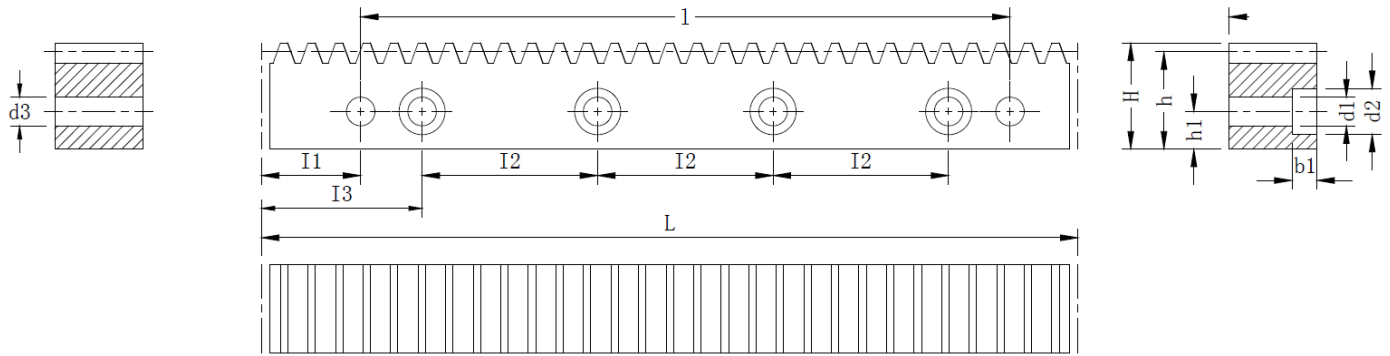


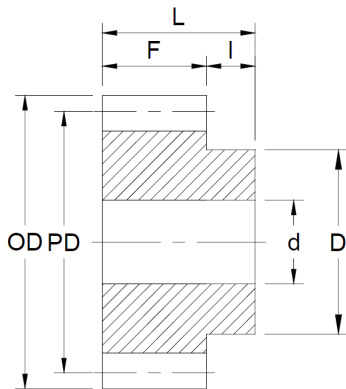
# Straight Gear Rack (16 pitch, 20° pressure angle, 48" or 72" lengths, predrilled)



Part #	Diametrical Pitch	L	B	H	h	# of teeth	I1	I2	b1	h1	d1	d2	# of holes	Weight (kg)
RD16-48B	16	1221.88	19.05	19.05	17.46	245	24	125	7	8	7	11	10	2.8
RD16-72B	16	1830.33	19.05	19.05	17.46	367	20.17	125	7	8	7	11	15	4.5

Specifications	
Pressure Angle	20°
Material	C45
Heat Treatment	--
Tooth Surface Treatment	--
Precision Grade	AGMA 9
Ends machined for continuous linking	

## Mating Spur Gears (for rack above)



Specifications	
Pressure Angle	20°
Material	C45
Heat Treatment	Quenching & Tempering
Tooth Surface Treatment	--
Precision Grade	AGMA 9

Part #	Diametrical Pitch	# of teeth	PD	OD	d	D	F	I	L	Weight (kg)
SD16-16Q	16	16	21.43	28.58	12.7	20.57	19.05	12.7	31.75	0.10
SD16-24Q	16	24	38.1	41.275	15.875	30.48	19.05	12.7	31.75	0.18
SD16-32Q	16	32	50.8	53.975	19.050	43.18	19.05	12.7	31.75	0.36

Note: bore size 12.7mm = 1/2", 15.875mm = 5/8" and 19.05mm = 3/4"