



# Stanchions

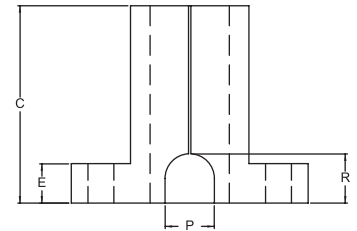
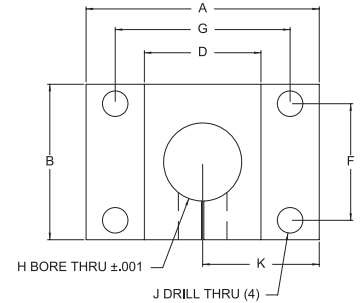
## STANCHIONS - Single Shaft Base



ITEM #	DESCRIPTION
659012	10 S 1" Diameter Single Shaft Base (10S) (25S)
659013	15 S 1" Diameter Single Shaft Base (15S)
659016	15 S 1.5" Diameter Single Shaft Base (15S)
659018	15 S 2" Diameter Single Shaft Base (15S)

### RECOMMENDED FASTENERS

QTY	ITEM#
(4)	651117 (for 659012)
(4)	651205 (for 659013)
(4)	651482 (for 659016)
(4)	651482 (for 659018)



ITEM #	LBS	A	B	C	D	E	F	G	H	J	K	P	R
659012	.705	3.000	2.125	2.500	1.500	.500	1.000	2.250	1.004	.257	1.500	.625	.625
659013	.700	3.000	2.125	2.500	1.500	.500	1.500	2.250	1.004	.328	1.500	.625	.625
659016	1.355	3.875	2.500	3.000	2.250	.750	1.500	3.000	1.505	.328	1.937	.875	.875
659018	2.220	4.750	3.500	3.500	2.750	.750	1.500	3.750	2.005	.328	2.375	1.250	.750

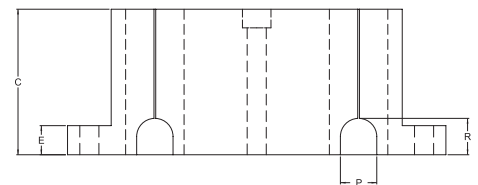
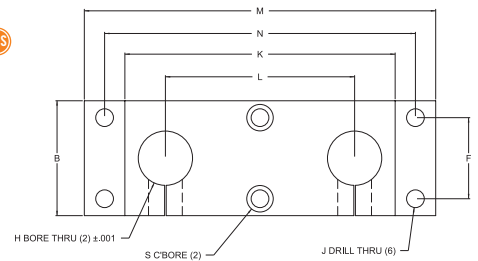
## STANCHIONS - Double Shaft Base



ITEM #	DESCRIPTION
659014	10 S 1" Diameter Double Shaft Base (10S) (25S)
659015	15 S 1" Diameter Double Shaft Base (15S)
659017	15 S 1.5" Diameter Double Shaft Base (15S)
659020	15 S 2" Diameter Double Shaft Base (15S)

### RECOMMENDED FASTENERS

QTY	ITEM#	&	QTY	ITEM#
(4)	651117	(2)	651483	(for 659014)
(4)	651205	(2)	651484	(for 659015)
(4)	651482	(2)	651485	(for 659017)
(4)	651482	(2)	651486	(for 659020)



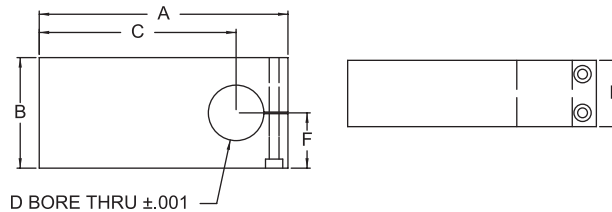
ITEM #	LBS	B	C	E	F	H	J	K	L	M	N	P	R	S
659014	2.230	2.000	2.500	.500	1.000	1.004	.257	5.000	3.500	6.500	5.750	.620	.625	.406 x .26 Deep
659015	2.225	2.000	2.500	.500	1.500	1.004	.328	5.000	3.500	6.500	5.750	.620	.625	.50 x .32 Deep
659017	3.590	2.500	3.000	.750	1.500	1.505	.328	6.125	3.875	7.750	6.875	.875	.825	.50 x .32 Deep
659020	6.030	3.500	3.500	.750	1.500	2.005	.328	7.500	4.750	9.500	8.500	1.250	.750	.50 x .32 Deep

## STANCHIONS - Single Shaft Blank Mounting Plate 10S 15S 25S 40S



ITEM #	DESCRIPTION
659023	1" Diameter Single Shaft Blank Mounting Plate
659026	1.5" Diameter Single Shaft Blank Mounting Plate
659028	2" Diameter Single Shaft Blank Mounting Plate

ITEM #	LBS	A	B	C	D	E	F
659023	.965	4.500	2.000	3.562	1.004	1.250	1.000
659026	2.515	6.500	3.000	5.125	1.505	1.500	1.500
659028	5.295	7.750	4.000	6.125	2.005	2.000	2.000

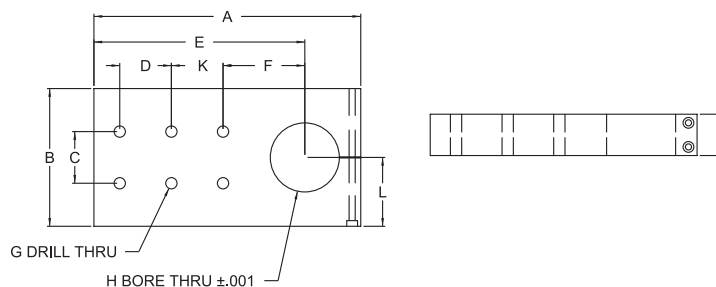


## STANCHIONS - Single Shaft Pre-Drilled Mounting Plate



ITEM #	DESCRIPTION
659024	10 S 1" Diameter Single Shaft Pre-Drilled Mounting Plate <span style="float: right;">10S 25S</span>
659025	15 S 1" Diameter Single Pre-Drilled Mounting Plate <span style="float: right;">15S</span>
659027	15 S 1.5" Diameter Single Shaft Pre-Drilled Mounting Plate <span style="float: right;">15S</span>
659029	15 S 2" Diameter Single Shaft Pre-Drilled Mounting Plate <span style="float: right;">15S</span>

ITEM #	LBS	A	B	C	D	E	F	G	H	J	K	L
659024	.940	4.500	2.000	1.000	1.000	3.560	2.062	4@.257	1.004	1.250	N/A	1.000
659025	.935	4.500	2.000	1.500	1.500	3.562	1.562	4@.328	1.004	1.250	N/A	1.000
659027	2.460	6.500	3.000	1.500	1.500	5.125	2.875	4@.328	1.505	1.500	N/A	1.500
659029	5.210	7.750	4.000	1.500	1.500	6.125	2.375	6@.328	2.005	2.000	1.500	2.000



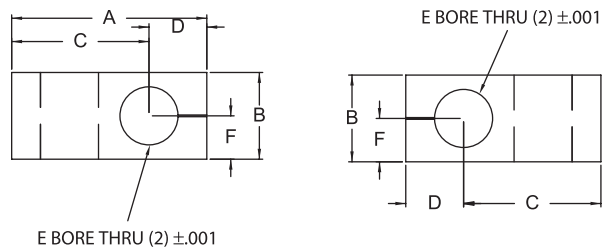
# Stanchions

## STANCHIONS - Single Shaft Mounting Block 10S 15S 25S 40S



ITEM # DESCRIPTION  
659019 10 S 1" Quick Cross Clamp

ITEM #	LBS	A	B	C	D	E	F
659019	.825	3.375	1.500	2.375	1.000	1.004	.750

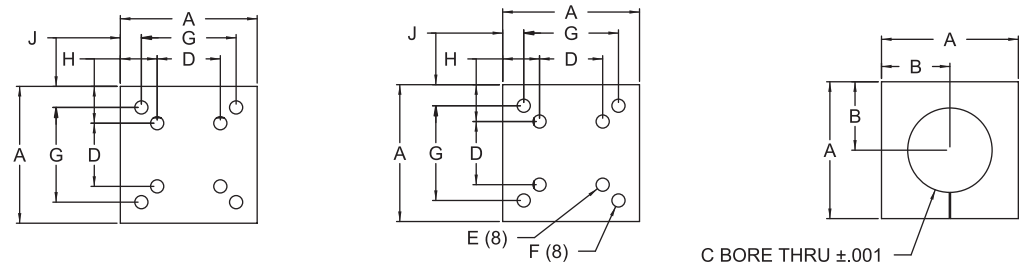


## STANCHIONS - Single Shaft Mounting Block 10S 15S 25S 40S



ITEM # DESCRIPTION  
659030 1" Diameter Single Shaft Mounting Plate

ITEM #	LBS	A	B	C	D	E	F	G	H	J
659030	.600	2.000	1.000	1.004	1.500	5/16-18X.500	N/A	N/A	.250	N/A



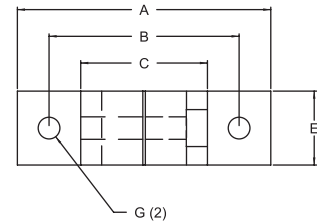
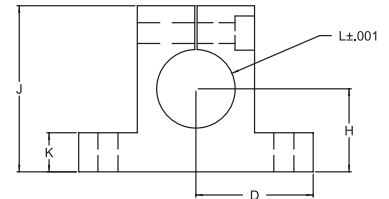
## STANCHIONS - Single Horizontal Base



ITEM #	DESCRIPTION
659044	10 S 1" Single Horizontal Base <span style="color: orange;">(10S)</span> <span style="color: orange;">(25S)</span>
659045	15 S 1" Single Horizontal Base <span style="color: orange;">(15S)</span>
659046	15 S 1.5" Single Horizontal Base <span style="color: orange;">(15S)</span>
659047	15 S 2" Single Horizontal Base <span style="color: orange;">(15S)</span>

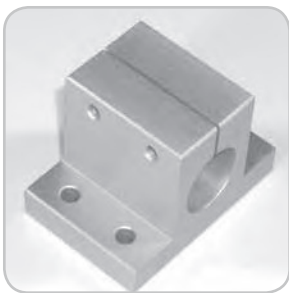
### RECOMMENDED FASTENERS

QTY	ITEM#
(2)	651117 (for 659044)
(2)	651205 (for 659045)
(2)	651482 (for 659046)
(2)	651487 (for 651487)



ITEM #	LBS	A	B	C	D	E	G	H	J	K	L
659044	.268	3.000	2.250	1.500	1.500	1.000	.257 THRU	1.062	2.125	.500	1.004
659045	.259	3.000	2.250	1.500	1.500	1.000	.328 THRU	1.062	2.125	.500	1.004
659046	1.253	3.875	3.000	2.250	1.937	1.250	.328 THRU	1.125	2.500	.750	1.505
659047	1.074	4.750	3.750	2.750	2.375	1.500	.328 THRU	1.625	3.500	1.000	2.005

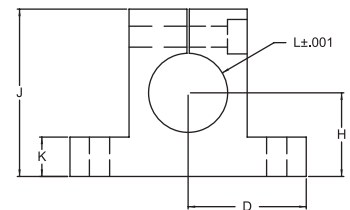
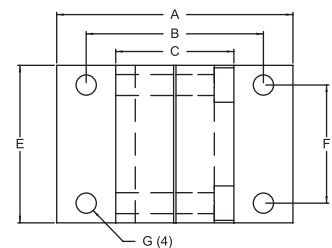
## STANCHIONS - Double Horizontal Base



ITEM #	DESCRIPTION
659049	10 S 1" Double Horizontal Base <span style="color: orange;">(10S)</span> <span style="color: orange;">(25S)</span>
659050	15 S 1" Double Horizontal Base <span style="color: orange;">(15S)</span>
659051	15 S 1.5" Double Horizontal Base <span style="color: orange;">(15S)</span>
659052	15 S 2" Double Horizontal Base <span style="color: orange;">(15S)</span>

### RECOMMENDED FASTENERS

QTY	ITEM#
(4)	651117 (for 659049)
(4)	651205 (for 659050)
(4)	651482 (for 659051)
(4)	651487 (for 659052)



ITEM #	LBS	A	B	C	K	E	F	G	H	J	K	L
659049	.575	3.000	2.250	1.500	1.500	2.000	1.000	.257 THRU	1.062	2.125	.500	1.004
659050	.568	3.000	2.250	1.500	1.500	2.000	1.500	.328 THRU	1.062	2.125	.500	1.004
659051	1.210	3.875	3.000	2.250	1.937	2.500	1.500	.328 THRU	1.125	2.500	.750	1.505
659052	1.906	4.750	3.750	2.750	2.375	3.500	1.500	.328 THRU	1.625	3.500	1.000	2.005

# Stanchions

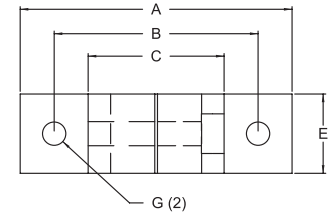
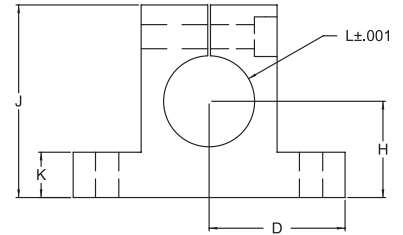
## STANCHIONS - Horizontal Quick Clamp



ITEM #	DESCRIPTION
659021	10 S 1" Horizontal Quick Clamp <span style="border: 1px solid black; border-radius: 50%; padding: 2px;">10S</span> <span style="border: 1px solid black; border-radius: 50%; padding: 2px;">25S</span>
659022	15 S 1" Horizontal Quick Clamp <span style="border: 1px solid black; border-radius: 50%; padding: 2px;">15S</span>

### RECOMMENDED FASTENERS

QTY	ITEM#
(2)	651117 (for 659021)
(2)	651205 (for 659022)



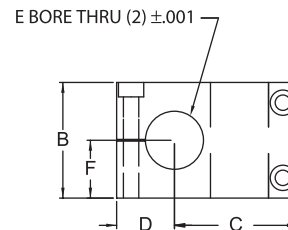
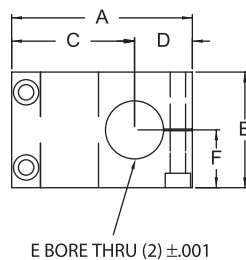
ITEM #	LBS	A	B	C	D	E	G	H	J	K	L
659021	.294	3.000	2.250	1.500	1.500	1.000	.257 THRU	1.062	2.125	.500	1.004
659022	.294	3.000	2.250	1.500	1.500	1.000	.328 THRU	1.062	2.125	.500	1.004

## STANCHIONS - Cross Clamp 10S 15S 25S 40S



ITEM #	DESCRIPTION
659031	1" Diameter Stanchion Cross Clamp
659033	1.5" Diameter Stanchion Cross Clamp
659035	2" Diameter Stanchion Cross Clamp

ITEM #	LBS	A	B	C	D	E	F
659031	.925	3.125	2.000	2.125	1.000	1.004	1.000
659033	1.665	4.125	2.500	2.875	1.250	1.505	1.250
659035	3.620	5.500	3.500	3.875	1.750	2.005	1.625



07:06